

**Doers Window
MANUFACTURING**
4901 Oak Fair Blvd., Tampa, FL 33610

6000 Series Model 6250 Sliding Patio Door

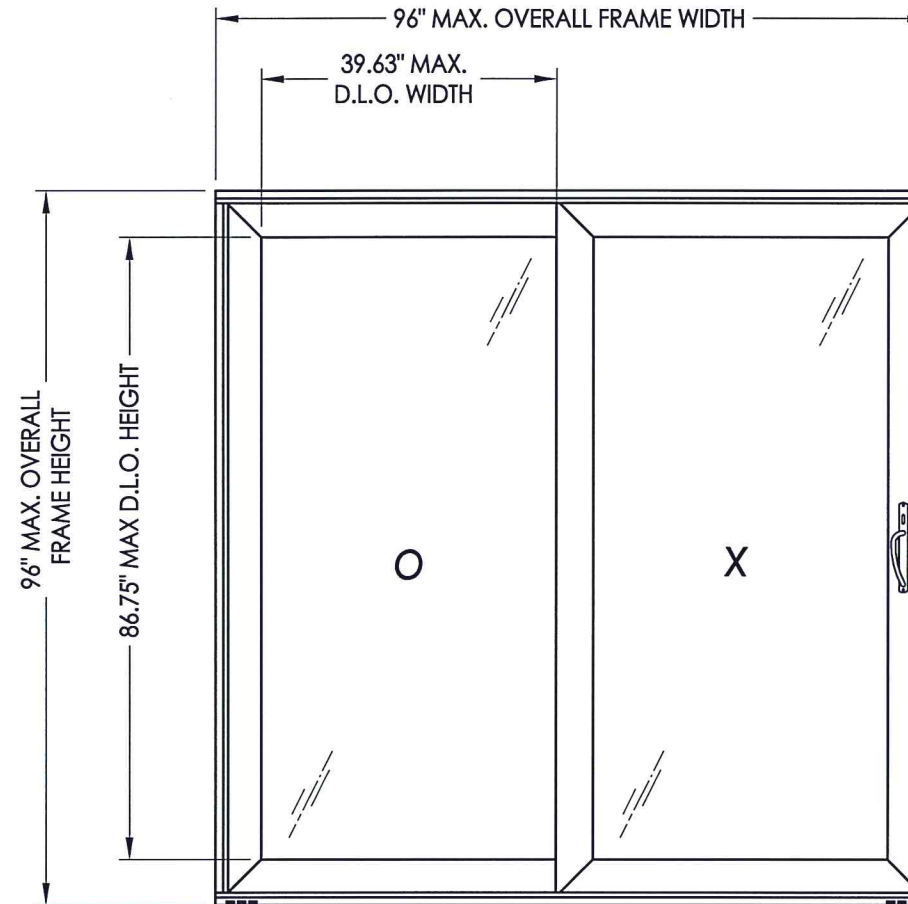
"IMPACT"

GENERAL NOTES

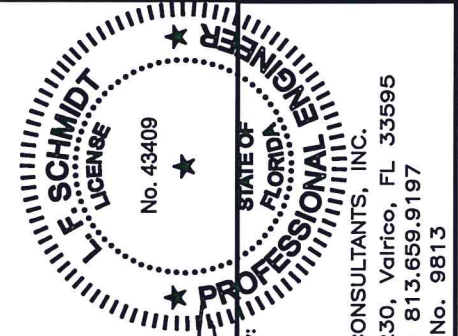
1. This product anchoring drawing has been evaluated and is in compliance with the 5th Edition (2014) Florida Building Code (FBC) including the "High Velocity Hurricane Zone" (HVHZ). See the Certification Agency Certificate for sizes, specifications & ratings.
2. Product anchors shall be as listed and spaced as shown on details. Anchor embedment to base material shall be beyond wall dressing or stucco.
3. When used in the "HVHZ", this product complies with Section 1626 of the Florida Building Code and does not require an impact resistant covering.
4. For 2x stud framing construction, anchoring of these units shall be the same as that shown for 2x buck masonry construction.
5. Site conditions that deviate from the details of this drawing require further engineering analysis by a licensed engineer or registered architect.

TABLE OF CONTENTS

SHEET#	DESCRIPTION
1	Typical elevations, design pressures & general notes
2	Horizontal cross sections
3	Vertical cross sections
4	Buck and frame anchoring
5	Bill of materials, glazing detail and components



MAX FRAME DIMENSION	MAX D.L.O. DIMENSION	INTERLOCK	GLASS TYPE	DESIGN PRESSURE (PSF)	
				POS.	NEG.
96.0" X 96.0"	39.63" X 86.75"	ALUM	G1	+50.0	-55.0



Documents Prepared By:
Lyndon F. Schmidt
P.E. No. 43409

LFS
6.17.15

PROFESSIONAL ENGINEER
STATE OF FLORIDA
No. 43409

RW
BUILDING CONSULTANTS, INC.
P.O. Box 230, Vairico, FL 33595
Phone No.: 813.659.9197
FBPE C.A. No. 9813

PRODUCT: Doers

PART OR ASSEMBLY:
TYPICAL ELEVATION, DESIGN
PRESSURES & GENERAL NOTES

NO.	DATE	BY	REVISIONS

DATE: 6/15/15

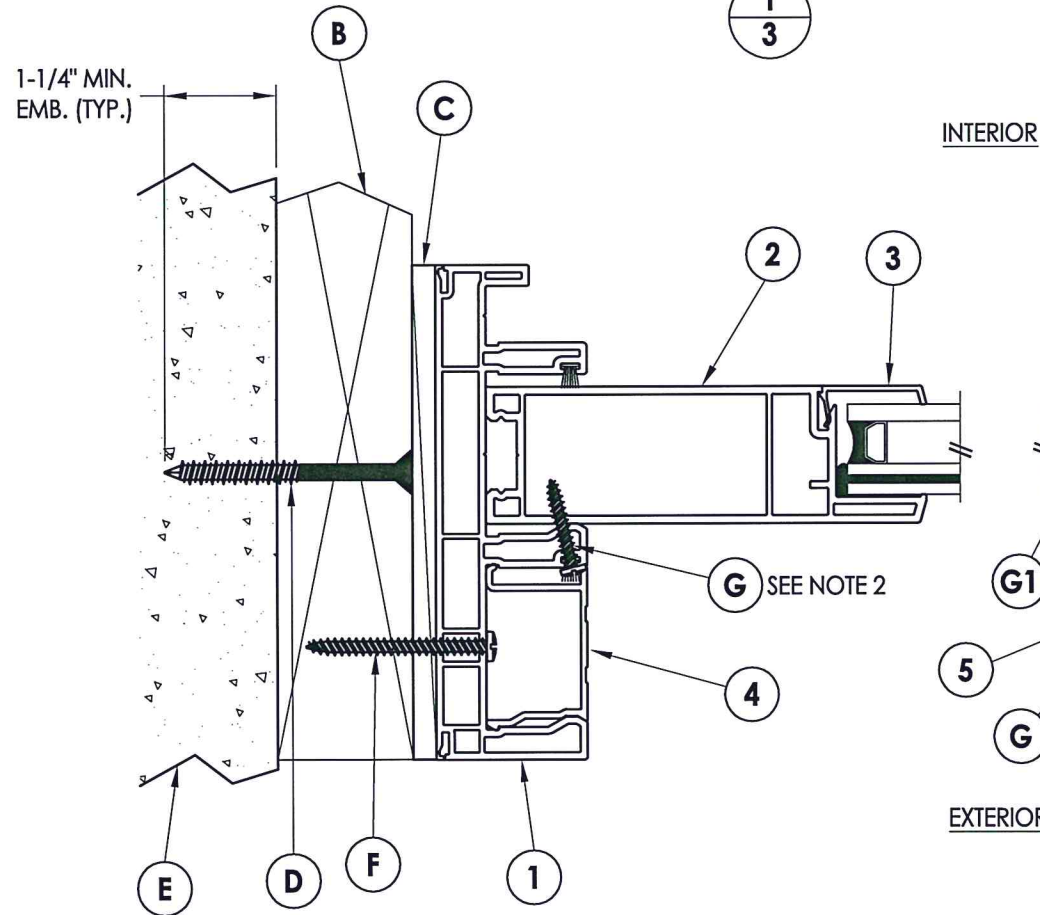
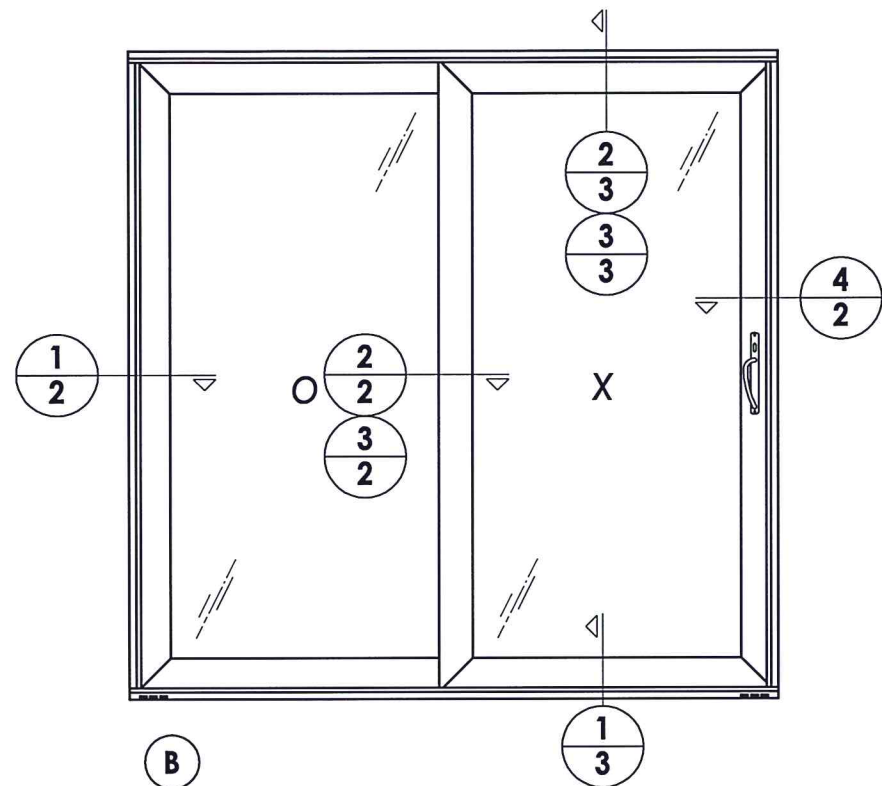
SCALE: N.T.S.

DWG. BY: JK

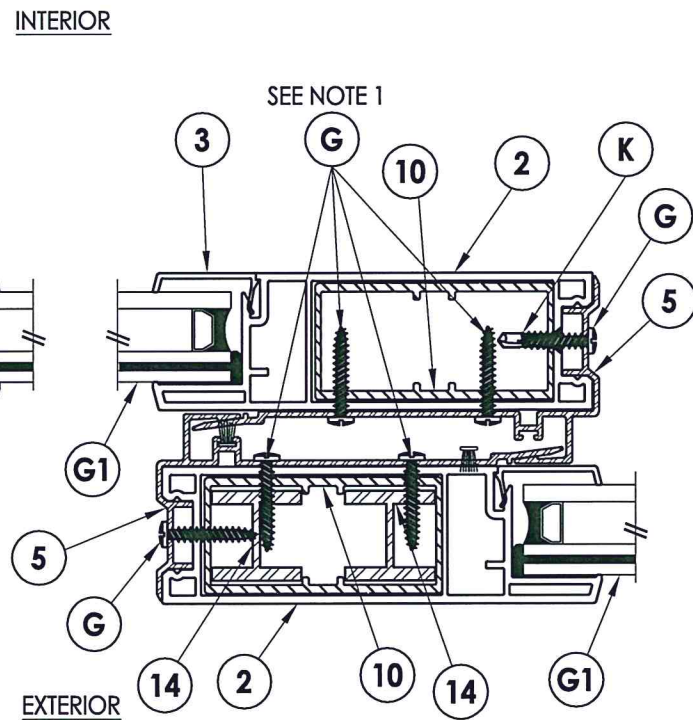
CHK. BY: LFS

DRAWING NO.:
FL-15450.3

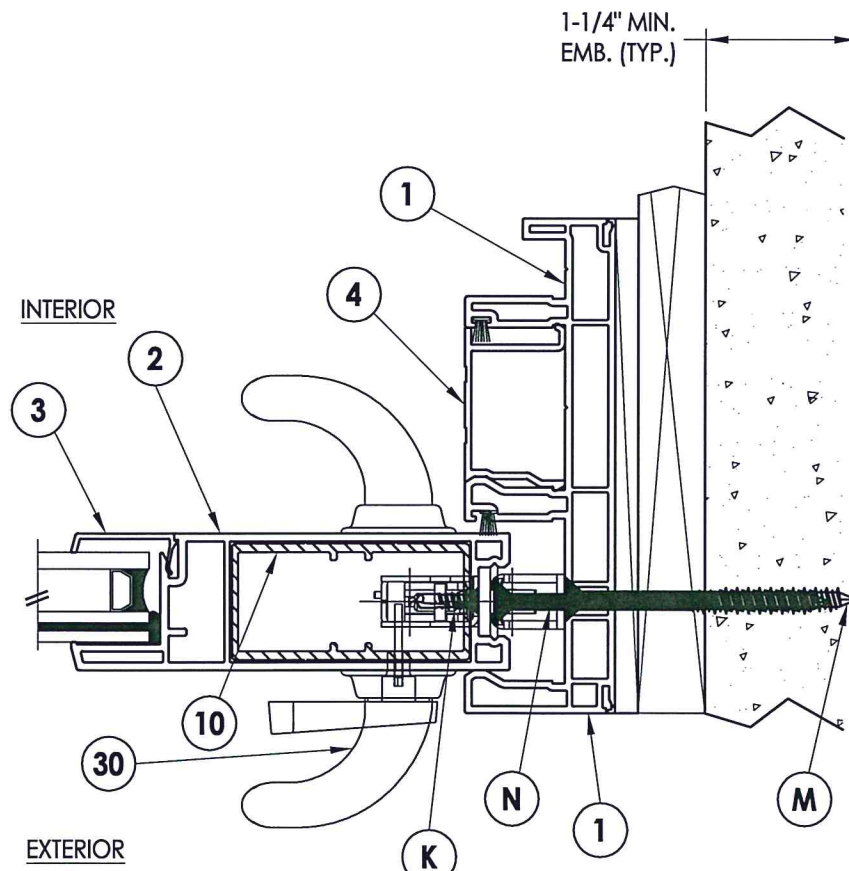
SHEET 1 OF 5



1 HORIZONTAL CROSS SECTION
2 2X Buck Masonry Construction

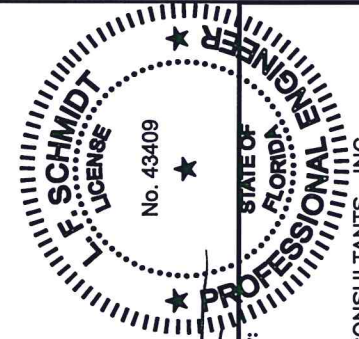


2 HORIZONTAL CROSS SECTION
2 ALUM INTERLOCK



3 HORIZONTAL CROSS SECTION
2 1X Buck Masonry Construction

NOTE:
 1. Item G, spaced 3" from each end and 6 more equally spaced (8 total).
 2. Fixed panel secured to frame with item G, 8" from each end and 2 more equally spaced (4 total).



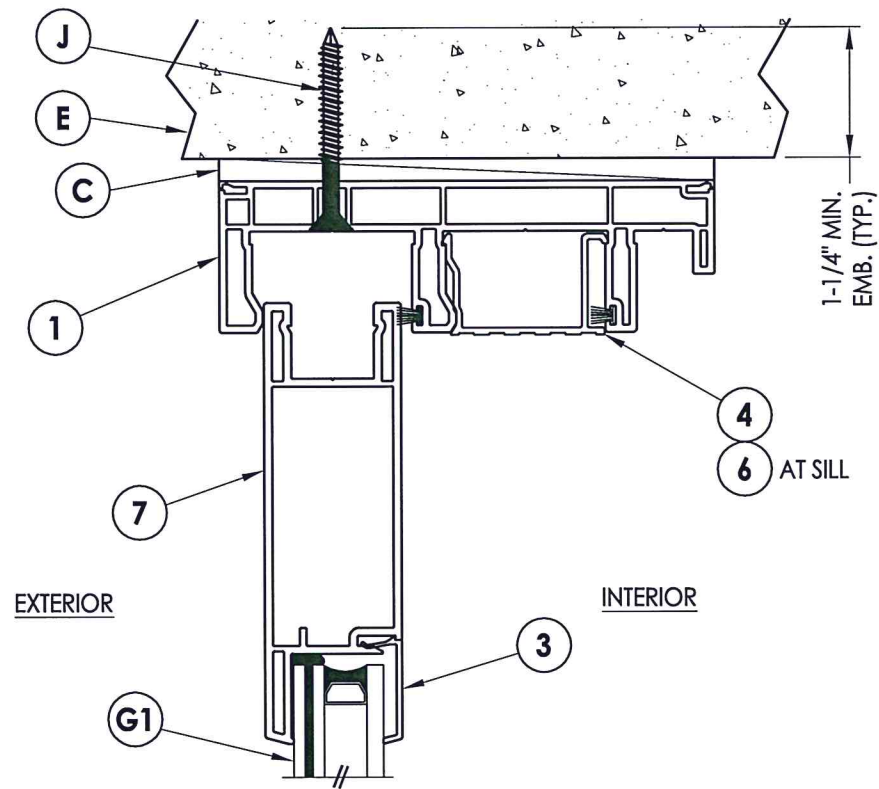
Documents Prepared By:
 Lyndon F. Schmidt
 P.E. No. 43409

R.W. BUILDING CONSULTANTS, INC.
 P.O. Box 230, Vairico, FL 33595
 Phone No.: 813.659.9197
 FBPE C.A. No. 9813

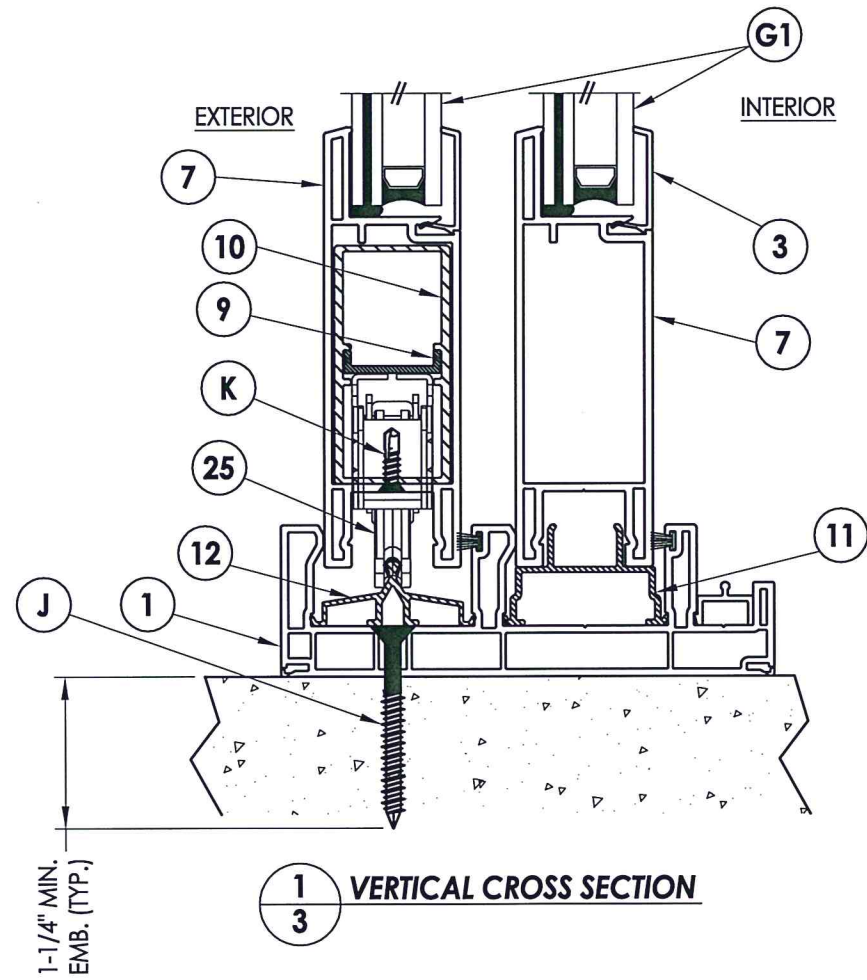
PRODUCT: Doers
 PART OR ASSEMBLY: HORIZONTAL CROSS SECTIONS

NO.	DATE	BY

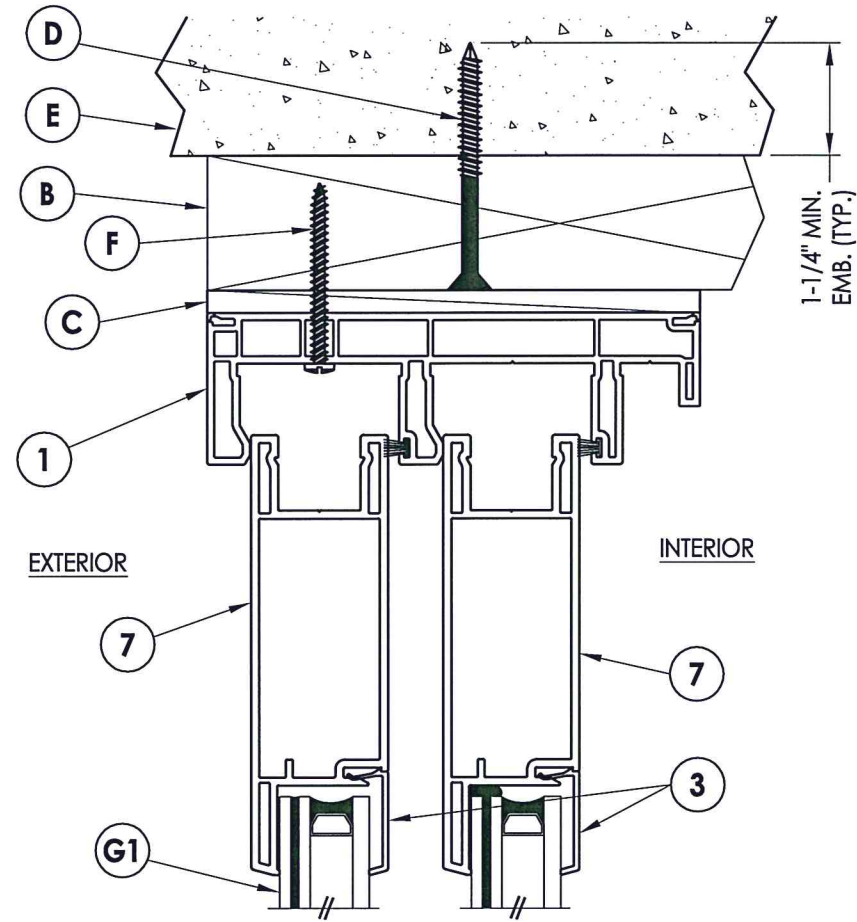
DATE: 6/15/15
 SCALE: N.T.S.
 DWG. BY: JK
 CHK. BY: LFS
 DRAWING NO.: FL-15450.3
 SHEET 2 OF 5



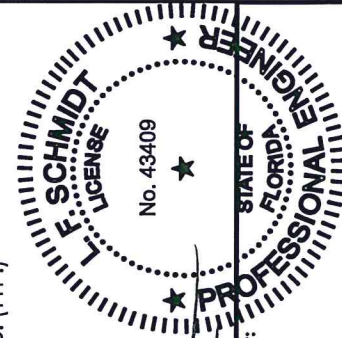
2 VERTICAL CROSS SECTION
3 Direct to Masonry Construction



1 VERTICAL CROSS SECTION
3



3 VERTICAL CROSS SECTION
3 2X Buck Masonry Construction



LFS
 6.17.15

Documents Prepared By:
 Lyndon F. Schmidt
 P.E. No. 43409

R.W. BUILDING CONSULTANTS, INC.
 P.O. Box 230, Valrico, FL 33595
 Phone No.: 813.659.9197
 FBPE C.A. No. 9813

PRODUCT:	Doers
PART OR ASSEMBLY:	VERTICAL CROSS SECTIONS

NO.	DATE	BY

DATE:	6/15/15
SCALE:	N.T.S.
DWG. BY:	JK
CHK. BY:	LFS
DRAWING NO.:	FL-15450.3
SHEET	3 OF 5

